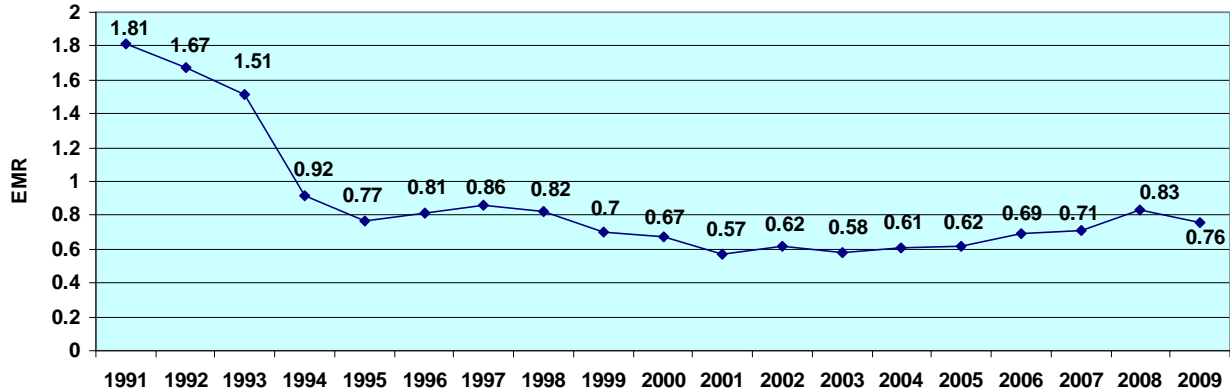


LPR SAFETY PERFORMANCE AND PROCESS

I. Worker's Compensation Insurance – Experience Modification Rate

A. Provide your EMR for each of the last three (3) years:

2009 (current year)	.76
2008	.83
2007	.71
2006	.69



OSHA Incident Rates

SIC: 1791 Specialty Trade Contractor

A. The following data is from LPR's OSHA 300 for each of the last three (3) years:

	<u>2008</u>	<u>2007</u>	<u>2006</u>
1. Number of employee hours worked.	965,475	964,745	655,390
2. Number of lost workday cases.	1	1	3
<i>Totals from columns H on the OSHA 300 log</i>			
3. Number of fatalities.	0	0	0
<i>Total from Columns G on the OSHA 300 log</i>			
4. Number of cases with days away for restricted activity.	7	6	13
<i>Totals from column I on the OSHA 300 log</i>			
5. Total number of medical only.	4	4	4
6. Total number of recordable cases.	11	10	17
<i>Total from column I & J on the OSHA 300 log</i>			
7. Total Incident Rate (TIR) calculated by using the following formula:	2.3	2.1	5.2
<i>Total of Line "6" above x 200,000</i>			
<i>Work-hours worked</i>			
8. Lost Work Day Incident Rate calculated By using the following formula:	.21	.21	.91
<i>Total of Line "2" above x 200,000</i>			
<i>Work-hours worked</i>			
9. Recordable/Restricted Incident Rate calculated by using the following formula:	1.5	1.2	1.8
<i>Total of line "4" above X 200,000</i>			