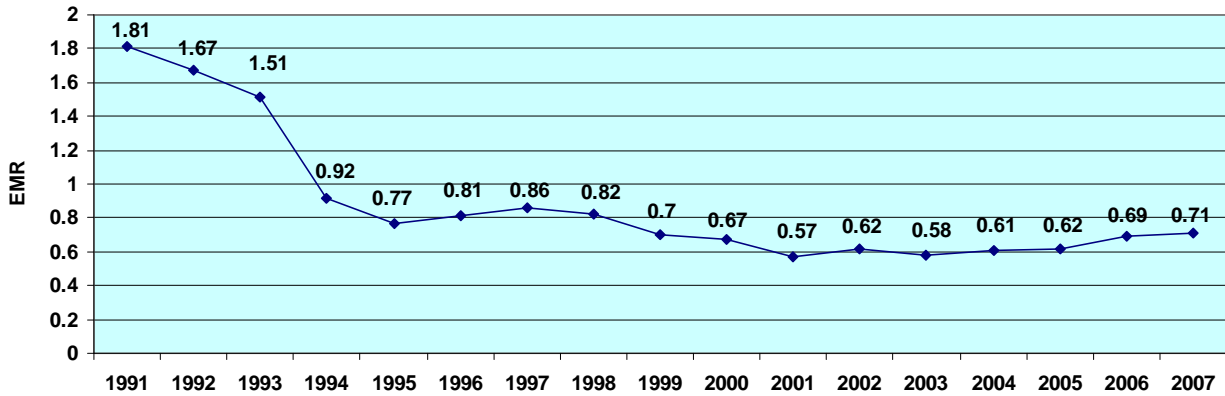


LPR SAFETY PERFORMANCE AND PROCESS

- I. Worker's Compensation Insurance – Experience Modification Rate
 A. Provide your EMR for each of the last three (3) years:

2007	.71
2006	.69
2005	.62



OSHA Incident Rates

SIC: 1791 Specialty Trade Contractor

- A. The following data is from LPR's OSHA 300 for each of the last three (3) years:

	<u>2007</u>	<u>2006</u>	<u>2005</u>
1. Number of employee hours worked.	964,745	655,390	553,218
2. Number of lost workday cases.	1	3	0
<i>Totals from columns H on the OSHA 300 log</i>			
3. Number of fatalities.	0	0	0
<i>Total from Columns G on the OSHA 300 log</i>			
4. Number of cases with days away for restricted activity.	6	13	5
<i>Totals from column I on the OSHA 300 log</i>			
5. Total number of medical only.	4	4	3
6. Total number of recordable cases.	10	17	8
<i>Total from column I & J on the OSHA 300 log</i>			
7. Total Incident Rate (TIR) calculated by using the following formula: <i>Total of Line "6" above x 200,000</i> <i>Work-hours worked</i>	2.1	5.2	2.9
8. Lost Work Day Incident Rate calculated by using the following formula: <i>Total of Line "2" above x 200,000</i> <i>Work-hours worked</i>	.21	.91	0
9. Recordable/Restricted Incident Rate calculated by using the following formula: <i>Total of line "4" above X 200,000</i>	1.2	1.8	2.0